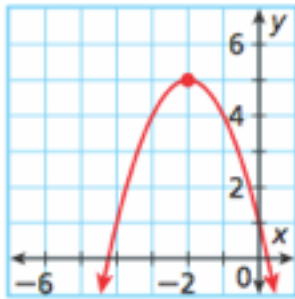


Forms of a Quadratic Review

Name _____

1.



axis of symmetry:
vertex:

3. $f(x) = -\frac{1}{4}(x - 1)^2 + 4$

vertex:
axis of symmetry:

5. $f(x) = \frac{1}{4}(x + 5)^2 + 2$

vertex:
axis of symmetry:

7. What are the zeros/solutions to the equation?

$$4x^2 + 5x - 6 = 0$$

2. $y = 2x^2 + 8x + 16$

axis of symmetry:
vertex:

4. $y = -3x^2 + 12x - 10$

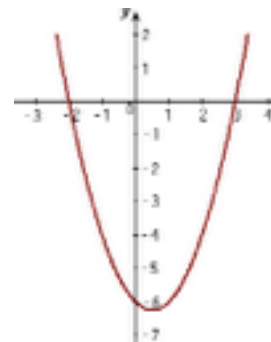
axis of symmetry:
vertex:
opens up or down?

6. What are the differences between the two graphs? (4 things!)

$$y = -1/2(x + 2)^2 + 1$$

$$y = 2(x - 4)^2 - 3$$

8. What are the roots/x-intercepts?



9. What are the x-intercepts/solutions?

$$5x^2 + 8x - 4 = 0$$

10. What are the zeros/roots?

$$y = 6x^2 - 24x + 27$$

11. What are the solutions?

$$2x - 5 = x^2 - 8x + 16$$